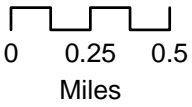


# Figure 1 Forested Wetlands and Emergent Habitat Chatham Township

Morris County, NJ

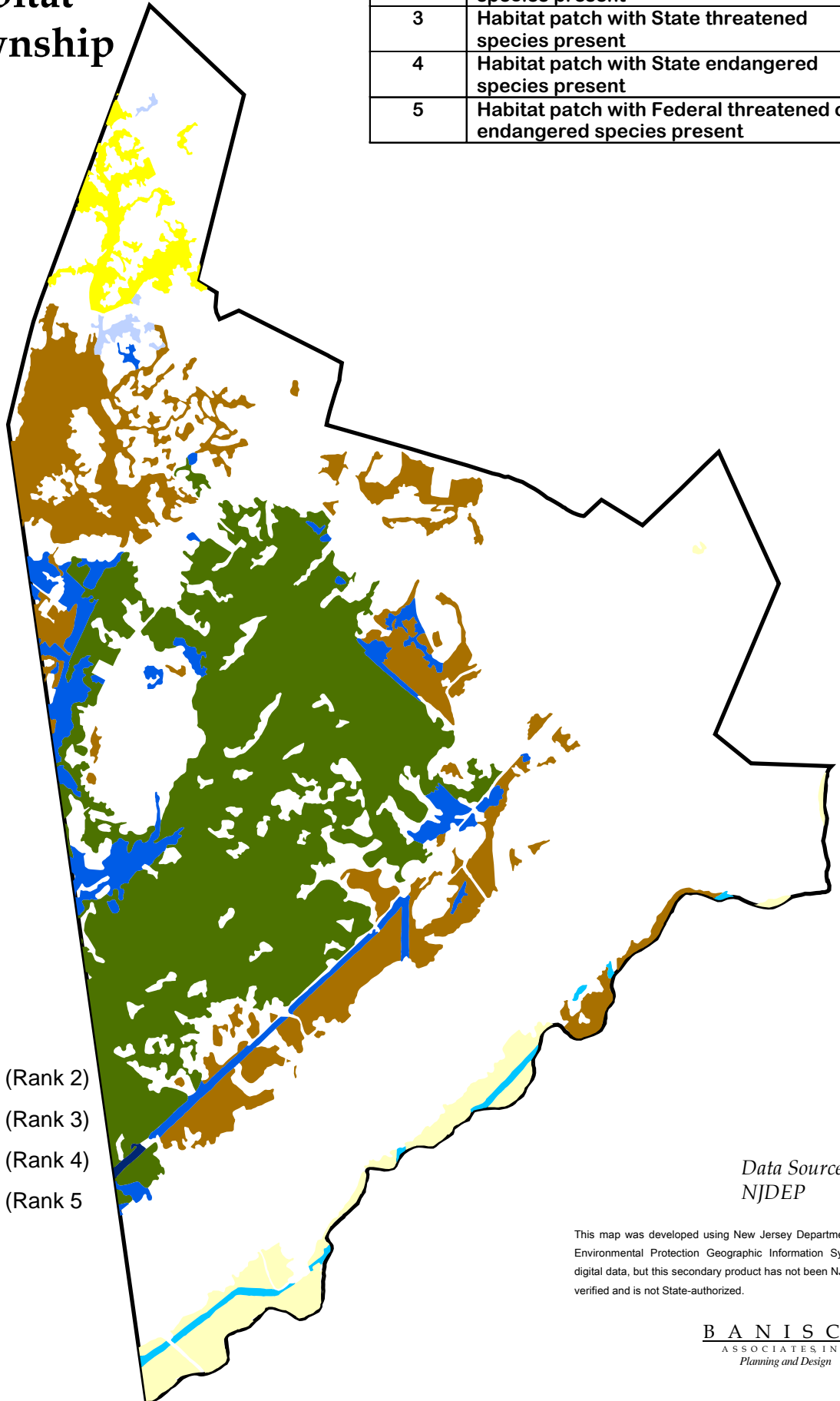
May 2005



| Rank | Indication  |
|------|---|
| 1    | Suitable habitat with no field survey conducted                     |
| 2    | Habitat patch with State special concern species present            |
| 3    | Habitat patch with State threatened species present                 |
| 4    | Habitat patch with State endangered species present                 |
| 5    | Habitat patch with Federal threatened or endangered species present |

## Legend

- Forested Wetlands (Rank 2)
- Forested Wetlands (Rank 3)
- Forested Wetlands (Rank 4)
- Forested Wetlands (Rank 5)
- Emergent (Rank 1)
- Emergent (Rank 2)
- Emergent (Rank 4)
- Emergent (Rank 5)



Data Sources:  
NJDEP

This map was developed using New Jersey Department of Environmental Protection Geographic Information System digital data, but this secondary product has not been NJDEP verified and is not State-authorized.

**BANISCH**  
ASSOCIATES, INC.  
Planning and Design